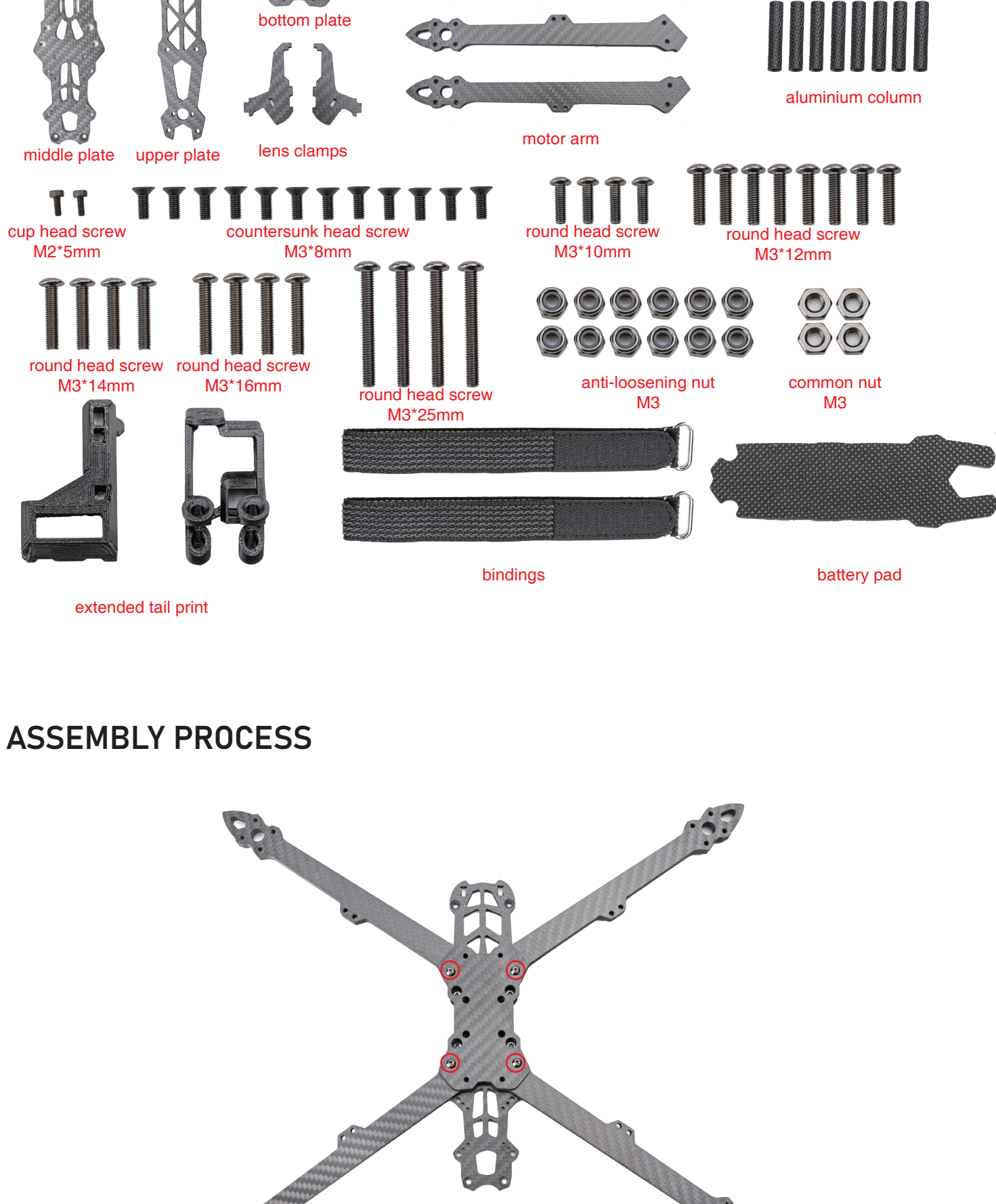
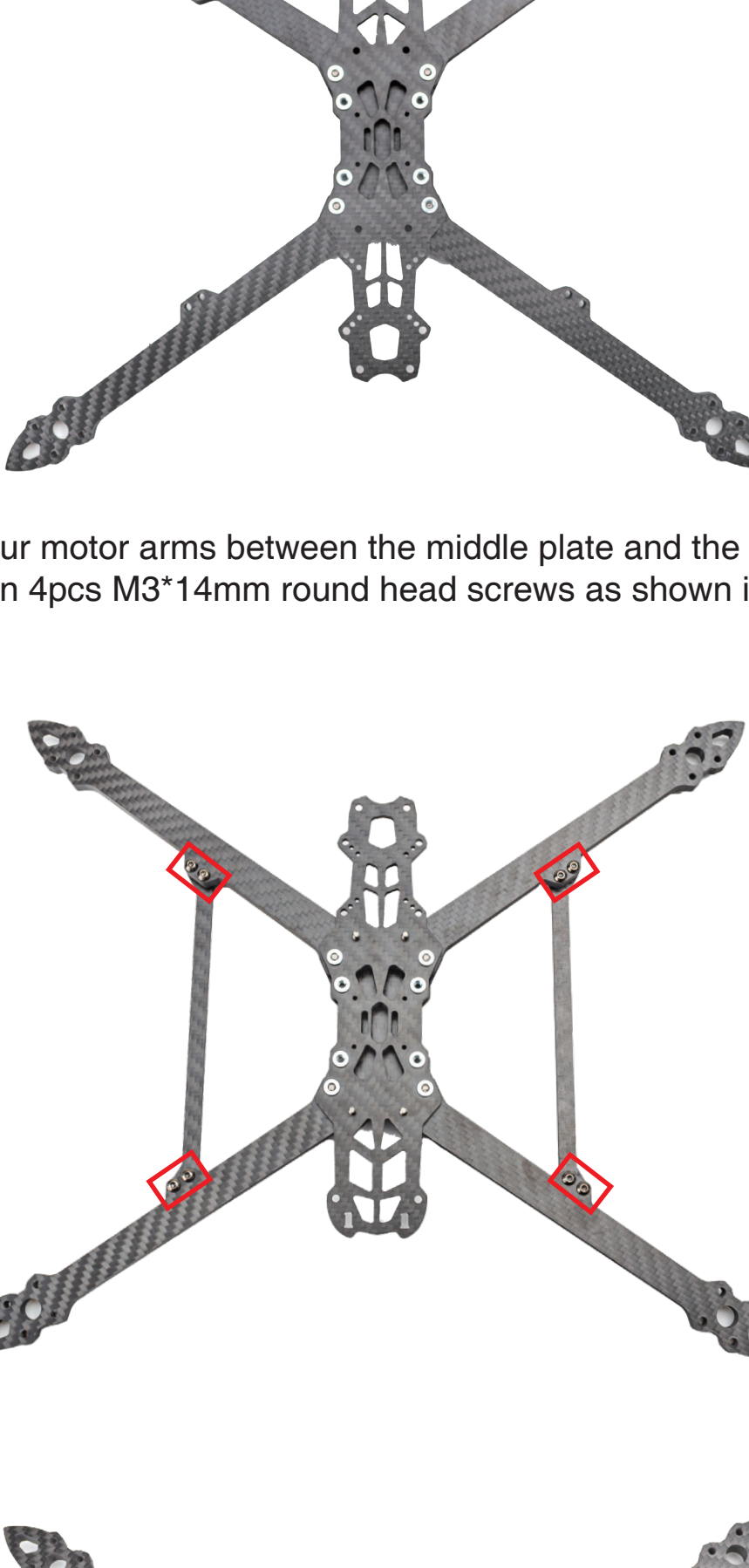


MARK 4-8 ASSEMBLY MANUAL

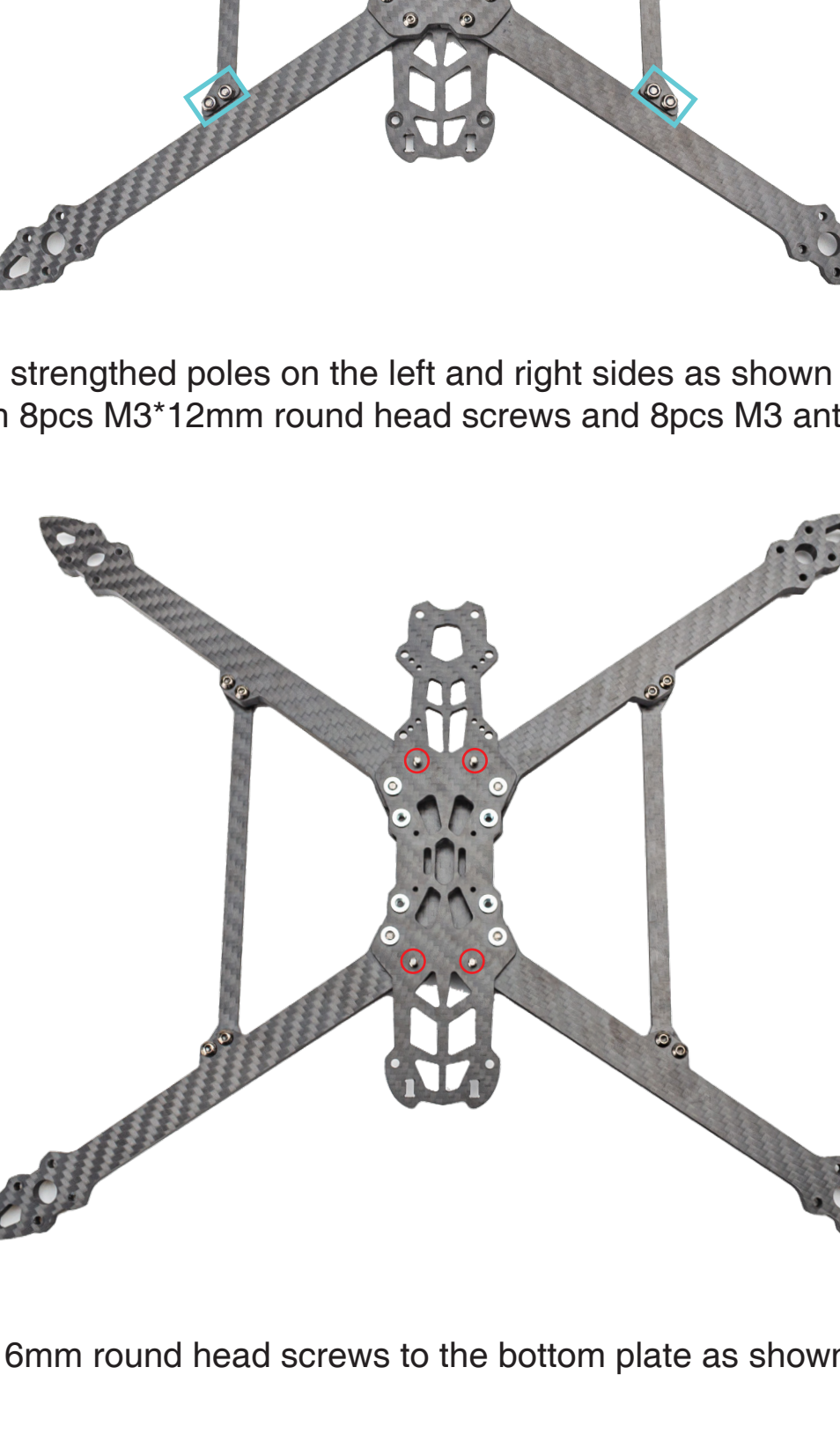
PART LIST



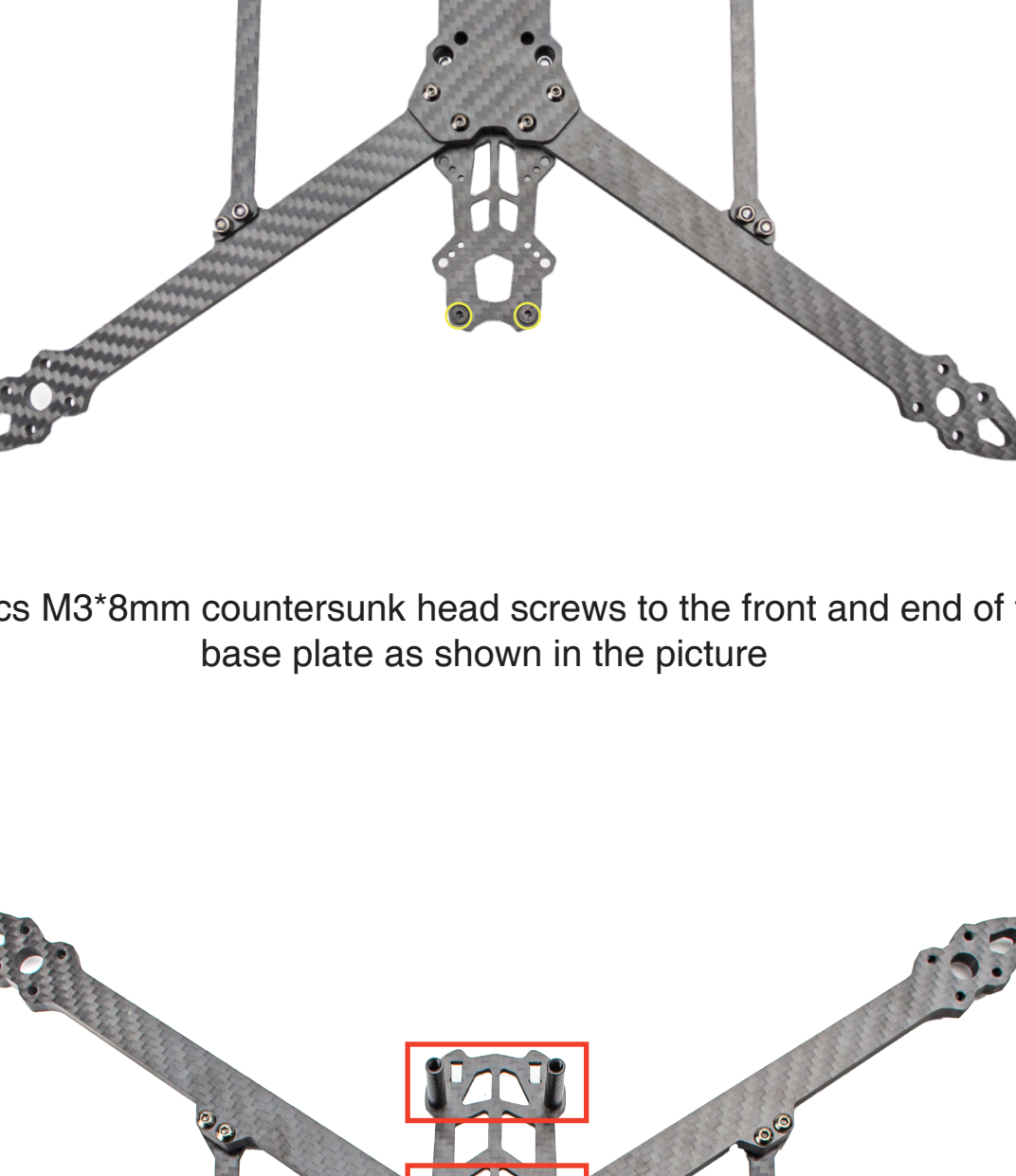
ASSEMBLY PROCESS



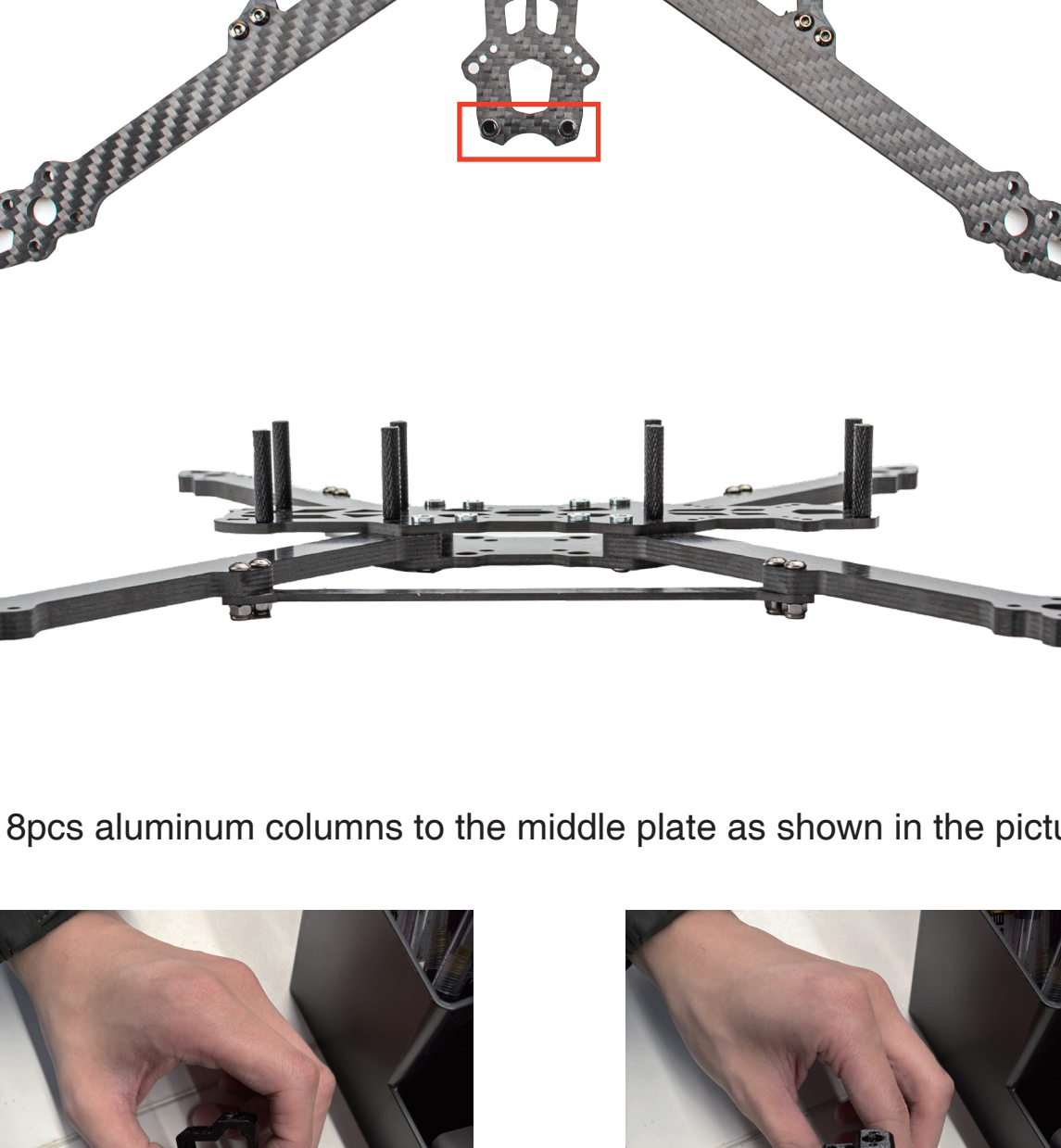
Clamp the four motor arms between the middle plate and the bottom plate and screw on 4pcs M3*14mm round head screws as shown in the picture



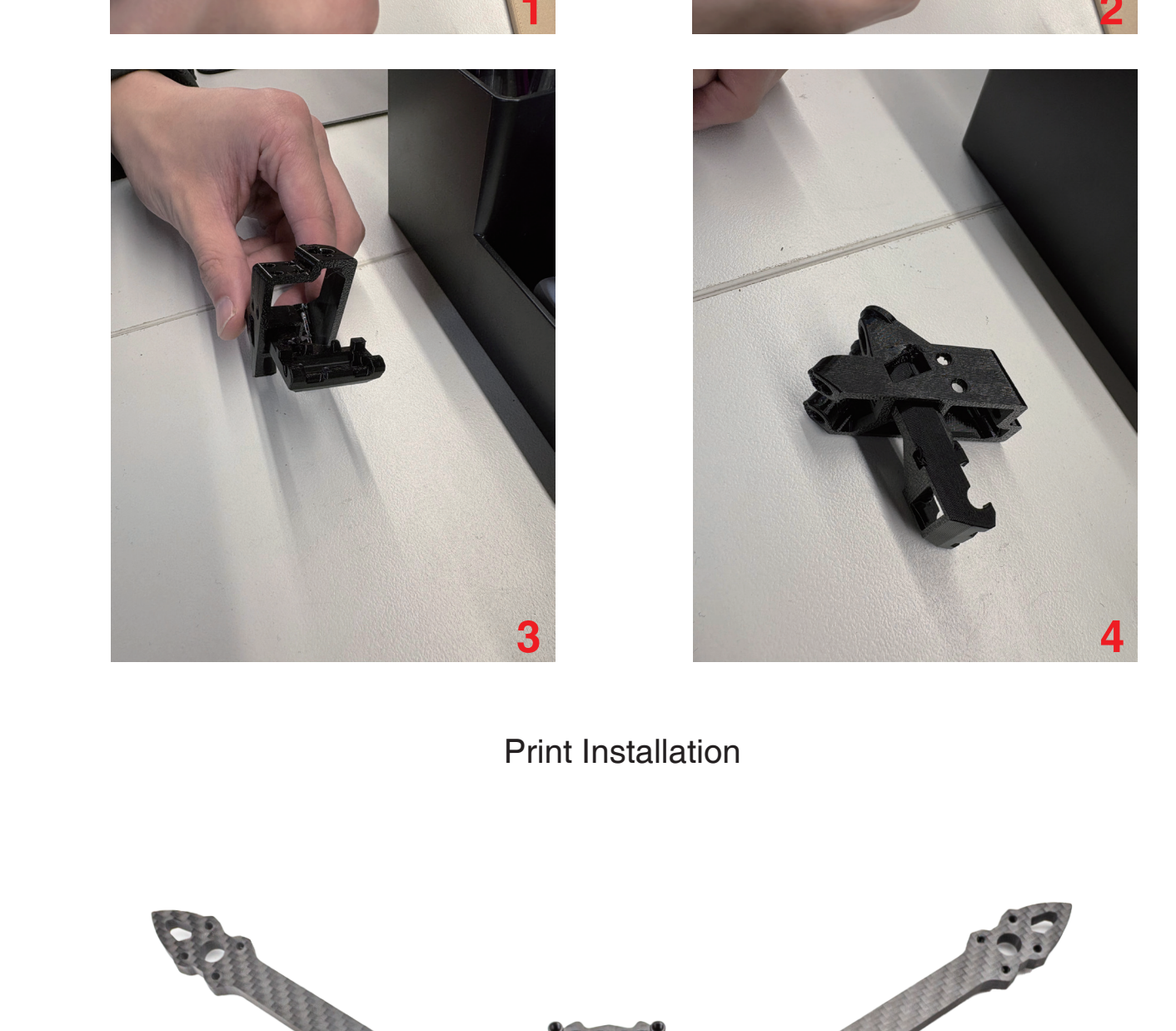
Place the two strengthened poles on the left and right sides as shown in the picture and fix them with 8pcs M3*12mm round head screws and 8pcs M3 anti-loosening nuts.



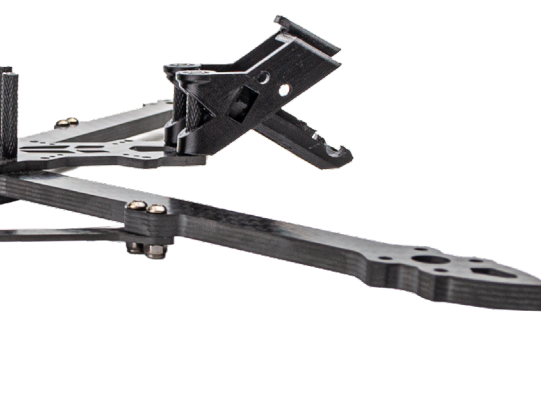
Fix 4pcs M3*16mm round head screws to the bottom plate as shown in the picture



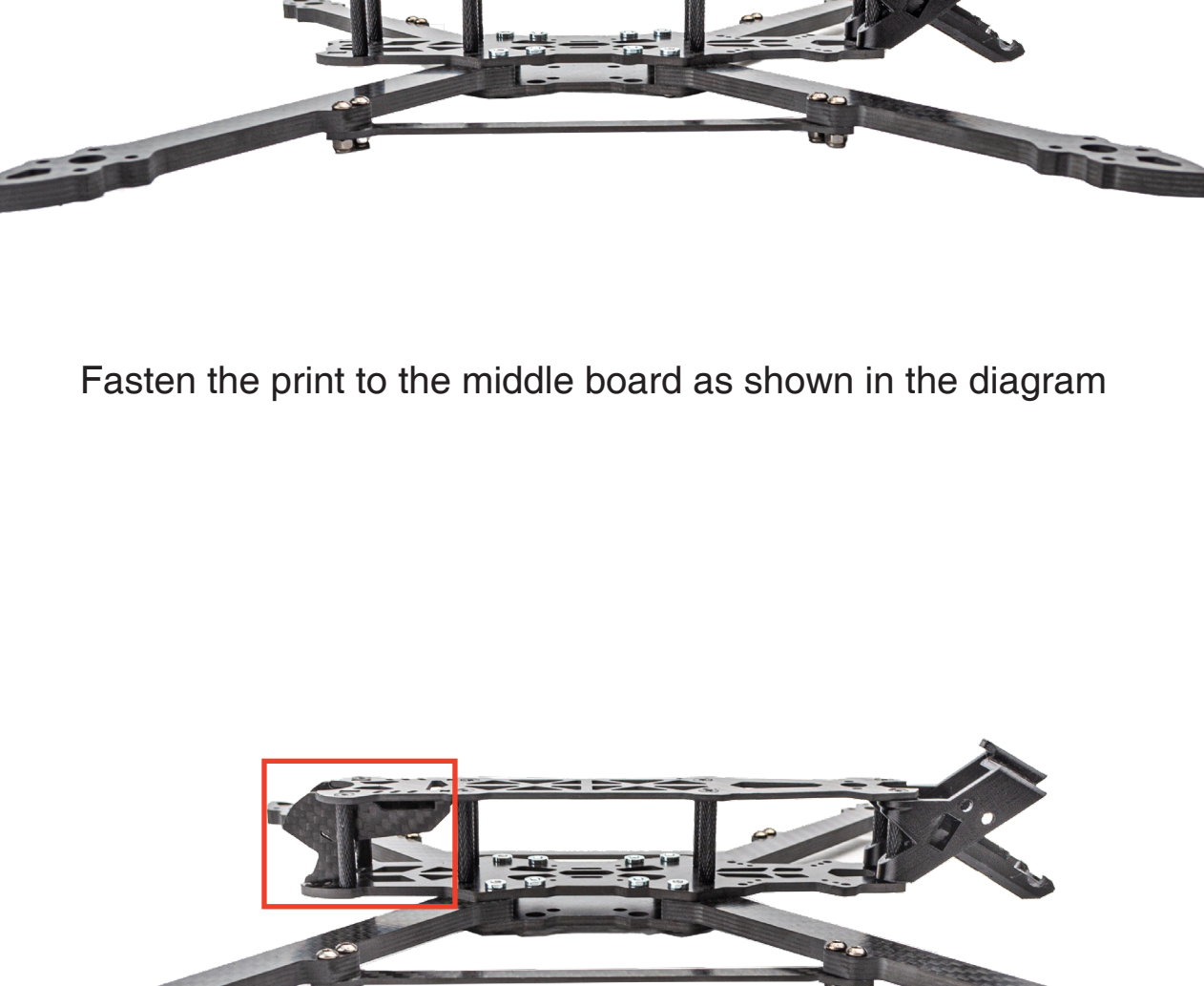
Fix 4pcs M3*8mm countersunk head screws to the front and end of the base plate as shown in the picture



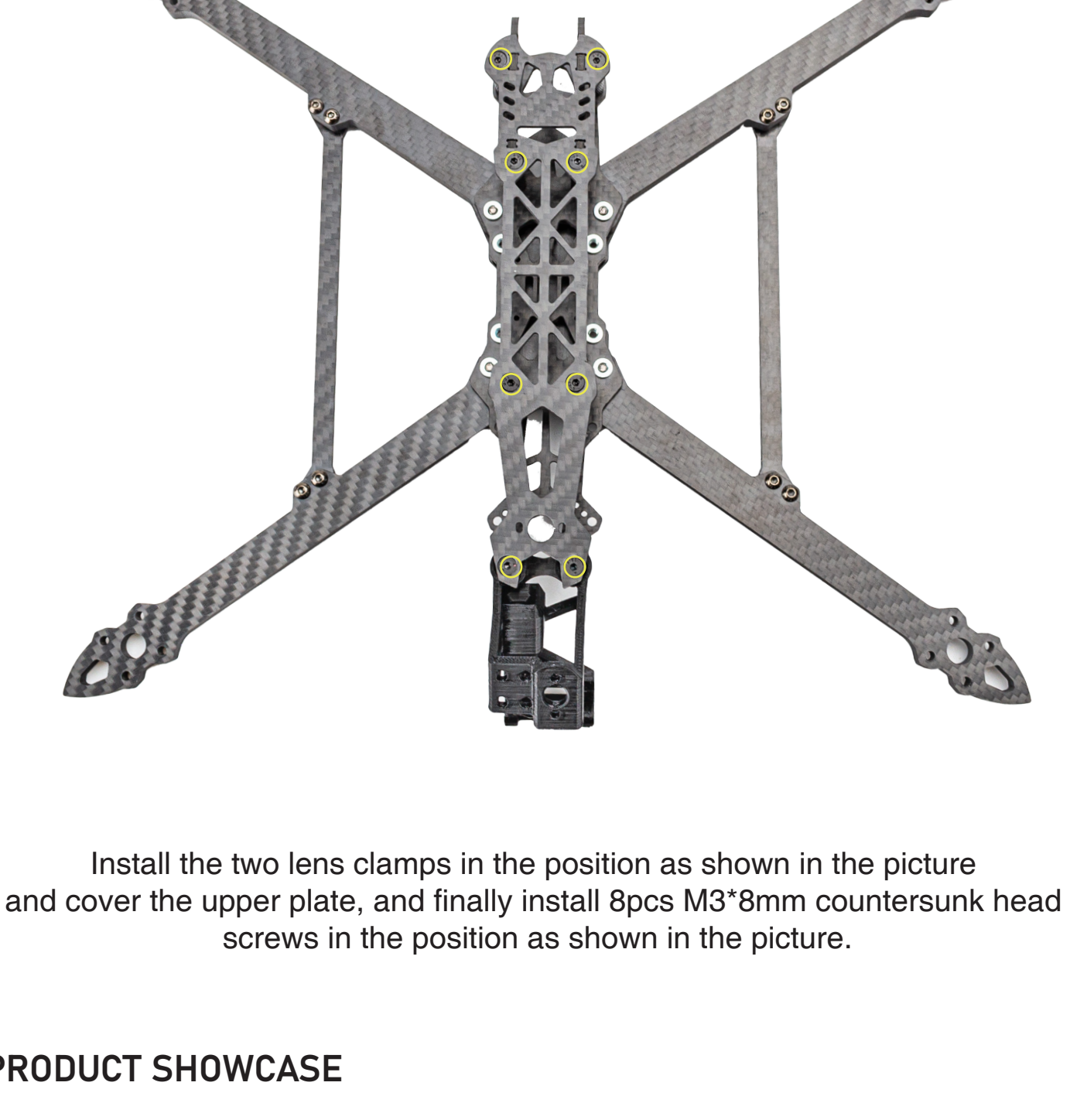
Fix 8pcs aluminum columns to the middle plate as shown in the picture



Print Installation



Fasten the print to the middle board as shown in the diagram



Install the two lens clamps in the position as shown in the picture and cover the upper plate, and finally install 8pcs M3*8mm countersunk head screws in the position as shown in the picture.

PRODUCT SHOWCASE

