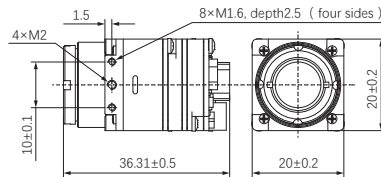


# Quick Start Guide for Industrial Camera Module

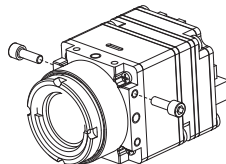
## ① Dimensions ( See Figure 1 )



( Figure 1 )

## ② Installation and Connection

According to ( Figure 2 ), fix the infrared core to the front of the drone.

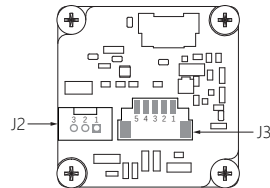


( Figure 2 )

## ③ Electrical Interface Connection

Connect the electrical interface according to ( Figure 3 ).

Pin definitions see ( Table 1, Table 2 ):



( Figure 3 )

External electrical interface 1	Power input, PAL video output		
Cable specifications ( accessories )	1.25T-3Y Terminal cable		
Board-end connector model	1.25T-3AL		
Pin Definition ( J2 )			
Pin Num.	Signal Name	Description	Signal Direction
1	DCIN_5V-12V	Thermal power positive supports 5V-12V wide voltage	Power input
2	GND	Ground signal	\
3	PAL_OUT	PAL analog video output	Output

( Table 1 )

### Unboxing Content Confirmation

1. Industrial camera
2. Cables ( power and video plug )
3. Installation fixing accessories ( screws )

External electrical interface 2		UART、USB	
Cable specifications ( accessories )		J1005H05 / 10368#28-200MM	
Board-end connector model		1.0T-5AB	
Pin Definition ( J3 )			
Pin Num.	Signal Name	Description	Signal Direction
1	UART3_TX_3V3	Serial communication thermal transmit 3.3V level	Output
2	UART3_RX_3V3	Serial communication thermal receive 3.3V level	Input
3	GND	Ground signal	\
4	USB_DP	USB2.0_DP	Bi-directional
5	USB_DN	USB2.0_DN	Bi-directional

( Table 2 )

**Cable Bundling Notes:**

1. It is recommended to route the PAL analog video separately and shield it to the signal ground to avoid interference from other digital signals.
2. USB\_DP/DN should be twisted and shielded.

**④ Power On**

After connecting the power supply, the industrial camera will perform a self-check and start up within 8 seconds.

**⑤ Safety and Maintenance Recommendations****1. Installation Precautions**

- a.Ensure the lens is unobstructed to avoid collisions or dust covering.
- b.After installation, manually shake the camera to confirm structural stability.

**2. Usage Environment**

- a.Avoid long-term use in extreme temperatures, high humidity, or high vibration environments.
- b.Avoid direct sunlight to prevent damage to the image sensor.
- c.Clean the lens surface regularly ( using lens paper with alcohol ).

**3. Fault Diagnosis**

Phenomenon	Possible Cause	Solution
No video output	Video output cable loose or disconnected	Reconnect the video output cable

**QUALITY INSPECTION CERTIFICATE**Product Name: Industrial Camera Module

Date of Manufacture: \_\_\_\_\_

Quality Inspector: \_\_\_\_\_